

Welcome



Congratulations on your engagement!

Whether your wedding will be traditional or modern, lavish or subtle, large or small, your dreams and personal style will come to life at the Saugatuck Center for the Arts.

This unique space – a renovated pie factory in the heart of historic downtown Saugatuck – offers a one-of-a-kind destination for your wedding.

We look forward to helping you plan the day of your dreams.

Saugatuck Center for the Arts

P.O. Box 940
400 Culver Street
Saugatuck, MI 49453

269.857.2399
www.sc4a.org

Teresa Palazzolo Zerfas, Rental Coordinator
Teresa@sc4a.org

Accommodations

Offering more than 23,000 square feet of distinctive event space indoors and out, this historic building is truly unique, providing beautiful landscaping and an artistic environment.

Amenities

Indoor & Outdoor Spaces

Wireless Internet

On-site Parking

Prep Kitchen for Caterers

Saugatuck Lodging & Attractions

Our lakeshore community offers a wide range of hotels, bed and breakfasts, amazing restaurants, excellent boutiques and shopping, spas, and several major golf courses.

Beautiful Lake Michigan beaches, woodlands, and sand dunes will enhance any visit.

Saugatuck is located only 12 miles from Holland, 40 miles from Grand Rapids, 50 miles from Kalamazoo, and 140 miles from Chicago.

Transportation

Easy access to public transportation, including daily Amtrak service from Chicago to Holland and Grand Rapids, the Gerald R. Ford International Airport, and the Greater Kalamazoo Airport.

Saugatuck also offers public transportation including the Interurban Bus and taxi services.

Outdoor Pavilion & Garden

Experience the elegant charm of our rain garden, where you will be surrounded by flourishing plants, beautiful sculptures and exquisite architecture.

This area offers a unique and elegant setting to make your ceremony or reception unforgettable.



*Select images by Bryan and Mae Photographers

Bertha Krueger Reid Theatre

Seating 410, the main stage in the Bertha Krueger Reid Theatre offers a versatile and artistic atmosphere, providing a large platform for your ceremony or entertainment.

Treat your guests to a mini-concert with professional sound and lights, or say "I do" on stage – the possibilities are only limited by your imagination.



**Select images courtesy of Tim Motley*

The Bob and Bobbie Lobby

More than a traditional "lobby," this hip, bold area easily transforms into an unforgettable space.

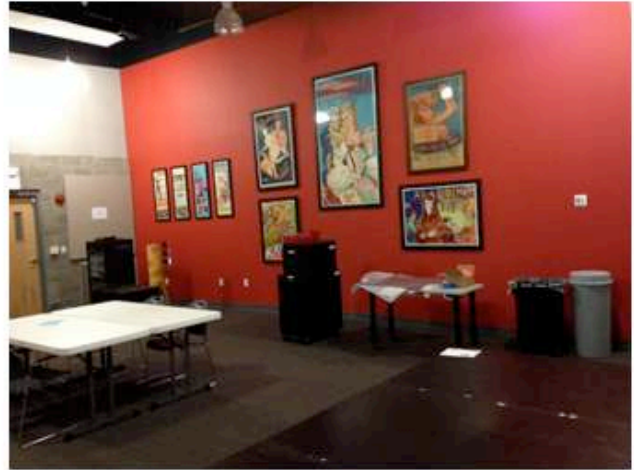
The lobby is the perfect setting for dinner and dancing with large windows that open to the garden and lake breeze.

So many possibilities await you; this space can truly become a perfect place to reflect your personal style.



Performance Studio

The Performance Studio is an acoustically balanced space with professional sound and lighting, creating an intimate venue ideal for small gatherings.



Private Room

This private space can accommodate all the bridal party's needs, transforming into a comfortable bridal changing room or gathering place.

Additionally, this room may be used as a space to entertain guests, children, store rental equipment, and more.



SAUGATUCK
CENTER FOR THE ARTS

Rental Rates

Rental Packages

Lobby Package: \$2,890

Seats up to 120

Pavilion/Rain Garden Package: \$2,890

Seats up to 200

Lobby/Pavilion/Rain Garden Package: \$4,200

Seats 120 – 200

Rental packages include: a 10-hour block of time, the use of available SCA tables (6) 8' banquet tables, (12) 6' banquet tables, (6) 36" round high-tops, restrooms and parking.

Additional Options

Additional Rooms

Dressing Rooms (2): \$575 per 4-hour block of time

Theatre: \$750 per 4-hour block of time

Private Room: \$300 per 4-hour block of time

Performance Studio: \$300 per 4-hour block of time

Additional Services

Piano Rental: \$600/performance and an additional tuning fee of our Yamaha C-7 Concert Grand Piano

Storage: \$275/overnight storage of rental equipment, decorations, etc.

Beverage Service: \$6.00 per person: includes coffee, tea, bottled water, juice, and soda.

Additional Photos

